



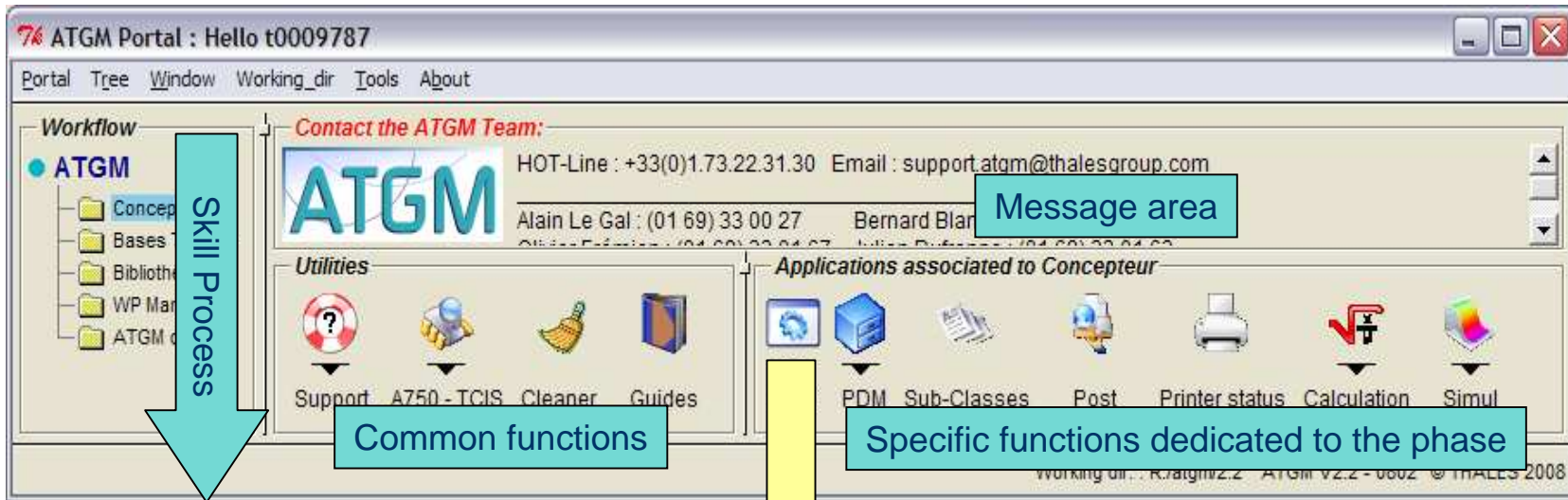
➔ **Mechanical Workbench ATGM**  
Engineering & Process Management

THALES EPM ATGM 0802

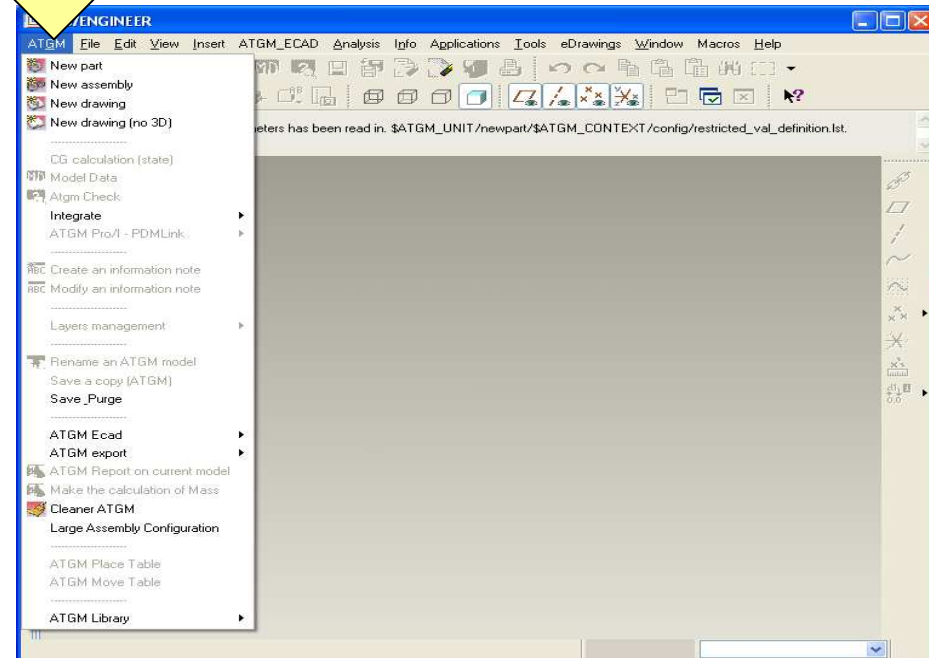


- **ERGONOMIC:**
  - Easy to use, optimised interfaces,
- **RELEVANT:**
  - Developed to meet the needs of the Mechanical CAD users,
- **ADJUSTABLE:**
  - Configurable to meet your organisation's specific requirements,
- **COLLABORATIVE:**
  - Between users, projects and between disciplines.
- **Add value**
  - Save time
    - Automate repetitive tasks...
  - Improve quality
    - Check the models...
  - Data
    - More than 5000 3D Pro/Engineer validated models available
      - Save time : to create the model
      - Collaborative work between projects and with ECAD

# Access to ATGM functionalities



- Only one interface
- Easy to use



# Starting a 3D model or assembly



**Renommage Libre du Modèle**

**NEWPART**

Nom du Modèle

Nom du fichier : 46800002\_300

Attributs à remplir :

Prise de numéro

Numéro de la pièce 468000

**Paramètres du modèle**

**NEWPART**

Attributs à remplir :

Titre en français : SUPPORT Format: ?\*40

Titre en Anglais : SUPPORT

Dessiné par : O. FREMION

Vérifié par : B. BLANCHETEAU

Approuvé par

Matière : AS7506 Masse volumique : 2.880000E-06 kg/mm<sup>3</sup>

Traitement

Peinture

Masse : 0.025921 kg

Retour CAO Annullation

- Choose data in a list
- Each information is stored in CAD model

Linked with enterprise PDM or Part number creator

To fill up the form, the user can pick up information within the technological data bases

Using the ATGM library, the user can take advantage of all information attached (weight...)

to the CAD system

46800002\_300 (Actif) D:\users\atgm\w1v\_wildfire\_2\_014\6800002\_300.PRT 6 - Pro/ENGINEER

ATGM Eclier Edition Michage Insertion ATGM\_ECAD Analyse Informations Applications Outils eDrawings Feuille Macros 2

46800002\_300 a été sauve.

46800002\_300.PRT

- ZZ DTM2
- ZZ DTM2
- ZZ DTM3
- 34x CSB
- PREMIERE PAROI
- PI 4 (8)
- Repetition 1 de Trou 1
- Repetition 2 de Trou 2
- Arond 1
- Q.ATGM
- CS
- Inclure ici

Paramètres Outils Atchier

46800002\_300

Type	Value	Désigner	Actifs	Source
Chaîne	46800002		<input type="checkbox"/>	Utilisateur
Chaîne	SUPPORT		<input checked="" type="checkbox"/>	Utilisateur
Chaîne	SUPPORT		<input checked="" type="checkbox"/>	Utilisateur
Chaîne	O. FREMION		<input checked="" type="checkbox"/>	Utilisateur
Chaîne	B. BLANCHETEAU		<input checked="" type="checkbox"/>	Utilisateur
Chaîne	AS7506		<input checked="" type="checkbox"/>	Utilisateur
Chaîne	0.025921		<input checked="" type="checkbox"/>	Utilisateur
Nombre réel	0.000000		<input checked="" type="checkbox"/>	Utilisateur

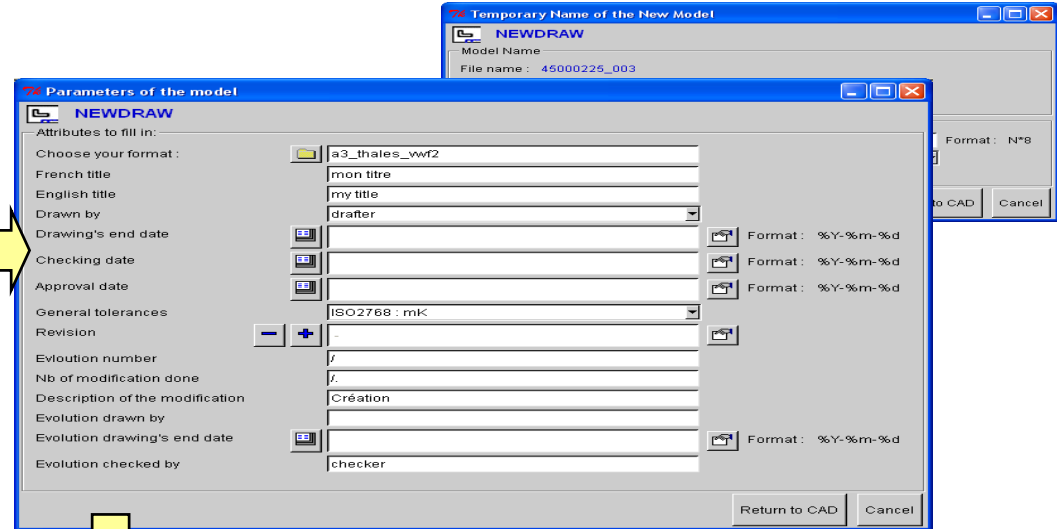
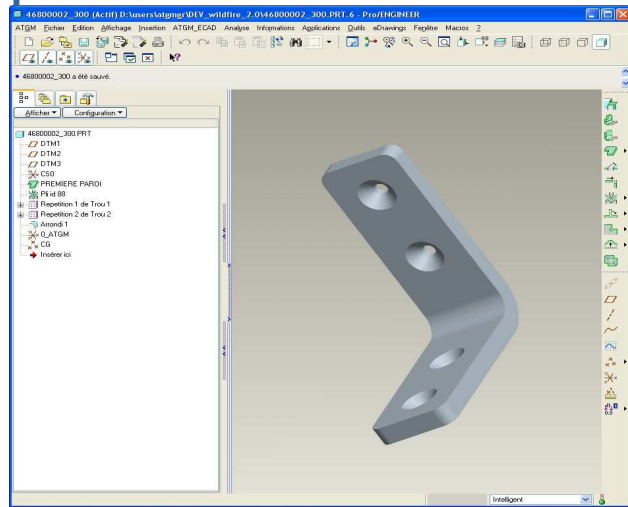
Commonspace Browser

Contents of /Roul/Folder/Library/444/44130

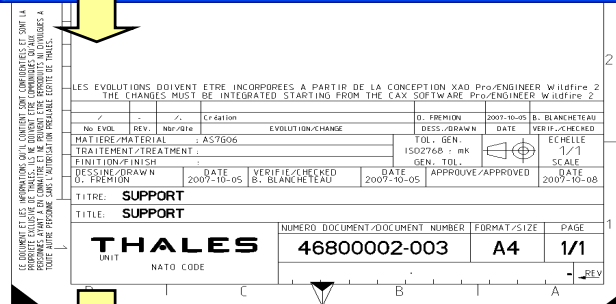
Name	Rev.	Vcr.	Tâle / 1	Algmnb_A_750	Algmnb_Sub_Cloos...
11555326_300.prt	A	0	DSX2H41S17S22-01	44130	056
9151121s_300.prt	A	0	DSX2H41S17S22-01	44130	056
91538479_300.prt	A	0	DSX2H41S17S23 01	44130	056
91487047_300.prt	A	0	DSX2H41S23S23-01	44130	050
91497778_300.prt	A	0	DSX2H41S23S23-04	44130	056
91497997_300.prt	A	0	DSX2H41S23S23 01	44130	056
91581058_300.prt	A	0	MCKC1-P-SP6A1-02.0	44130	010
91607448_300.prt	A	0	MCKC2-L-155A1-10.0	44130	018
91600982_300.prt	A	0	MCKC2-L-215A1-10.0	44130	018
91000903_300.prt	A	0	MCKC2-D-930A1-10.0	44130	010
91622182_300.prt	A	0	MCKC2-L-215A1-10.0	44130	018
91593340_300.prt	A	0	MCKC2-P-215-CBOK	44130	018
91503540_300.prt	A	0	MCKNN-H-074B1-10.0	44130	018
91649933_300.prt	A	0	MCKNN-L-5150A1-10.0	44130	018
91645705_300.prt	A	0	MCKNN-L-994B1-16.0	44130	018
91616910_300.prt	A	0	MCKNN-P-S15A1-10.0	44130	010
91639911_300.prt	A	0	MCKNN-P-SP6A1-02.0	44130	018
91459911_300.prt	A	0	MCKNN-P-SP6A1-02.0	44130	044
91455019_300.prt	B	0	MM0720-CVIS	44130	044
91450057_300.prt	D	0	MM0720-VLIS	44130	044
91541387_300.prt	B	0	MM0720-VRIS	44130	044

THALES EPM ATGM 0802

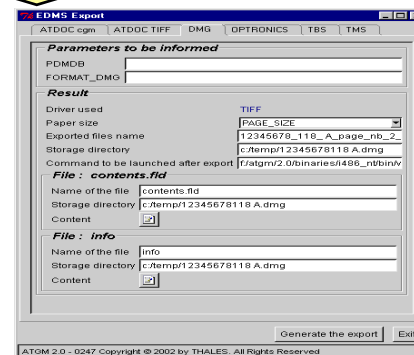
# Drawing with the same attributes



The title block of the drawing is fill up with the ATGM data



It's easy to export the drawing in a specific format (PDF, TIFF, HPGL...) The compliant file needed by your PDM or EDMS system is created by ATGM



Attributes coming from 3D models



- More than 300 users within Thales
  - ATGM Working group : Each user spare one half hour every day, and more with the library
- 50 users outside Thales
- Ask for information, EPM will analyse your need
- Quick start
  - 1 to 3 days
    - According the specific rules of the unit

■ Your feed back, Please

**THALES**